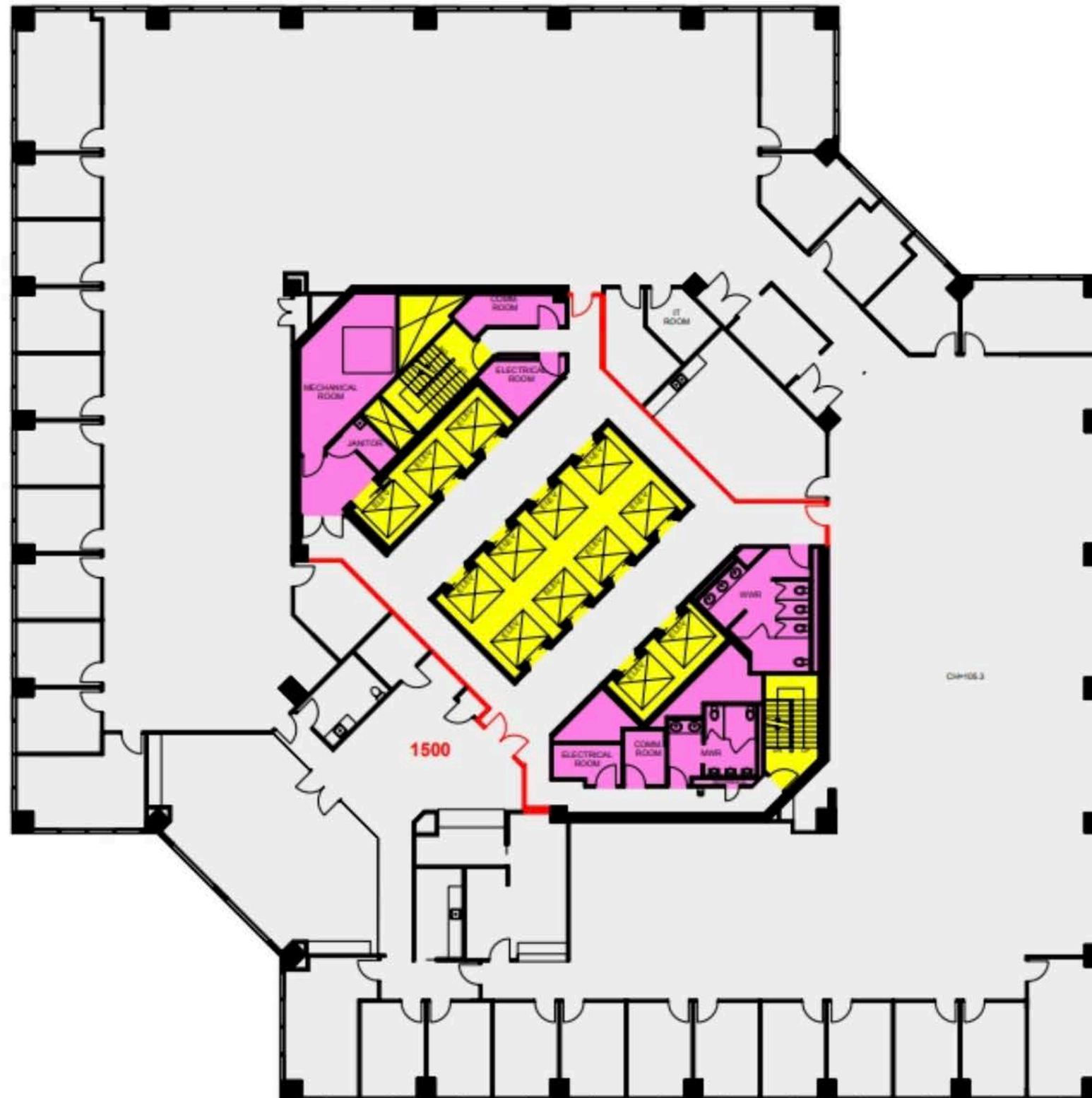


Tenant Usable Area
 Floor Common Area
 Building Common Area
 Major Vertical Penetration



Client: GWL Realty Advisors Inc.

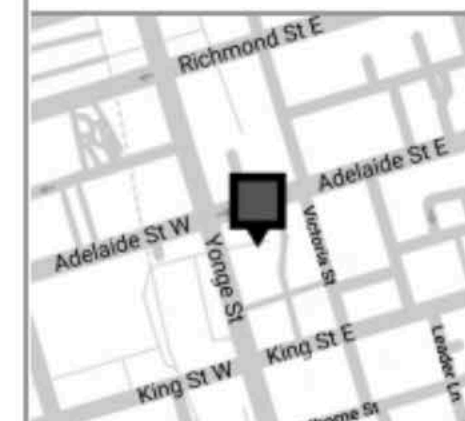


| | |
|------------------------|---|
| Version FP1A | Created: 03/23/2021 Measured: 04/22/2019 |
|------------------------|---|

1 Adelaide Street East
Toronto, Ontario, Canada

Floor 15

Please refer to corresponding
BOMA Office 1996 Area Chart:
[1adelaide-b96-5a.pdf](#)



This work product has been prepared by Extreme Measures Inc. pursuant to a contract with the Client for the sole benefit of and use by the Client. No third party may rely on this work product without the receipt of a reliance letter from Extreme Measures Inc.

extreme measures
 1.877.963.2787
mail@xmeasures.com
www.xmeasures.com